

AppBot-LINK

<Quick Guide>



1. Basic components

Basic components of AppBot-LINK are as belows.

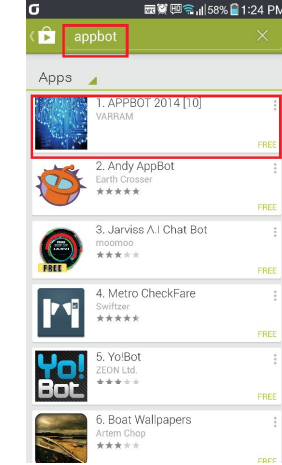
- AppBot-LINK (WiFi Dongle included)
- USB mini 5pin (Power Cable)
- Quick Guide



2. Downloading application

Connect to google play. Touch search screen and enter " appbot ".

(Apple App Store is to be updated later.)



Install APPBOT provided by VARRAM. Application provided is free.

* Images shown here can be changeable.

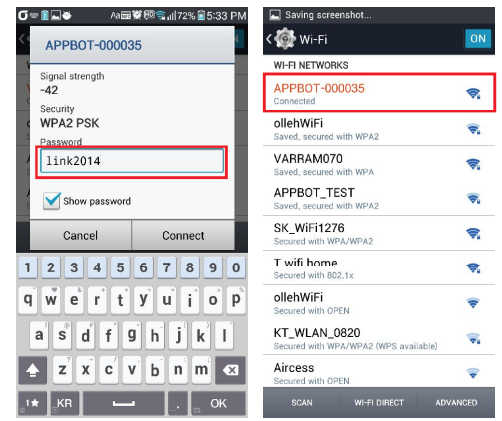
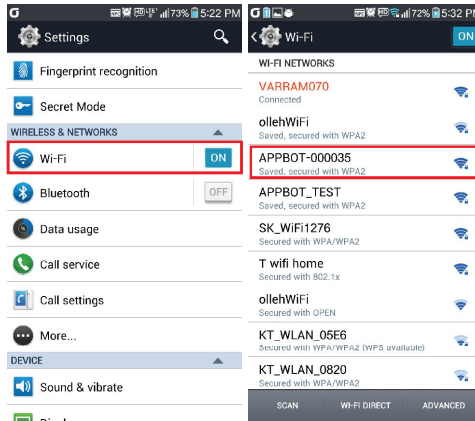
3. Starting AppBot-LINK

LED light is blinking when Power at front is on. Robot is ready to start when LED light quickly blinks.



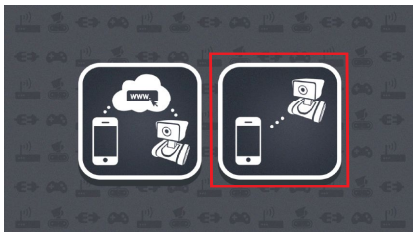
4. Access to AppBot-LINK

Search WIFI in smartphone and APPBOT-xxxxxx AP will be found. Select APPBOT-xxxxxx and enter p/w. Password is " link2014 ".

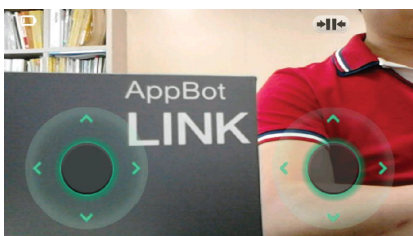


5. View imaging from AppBot-LINK

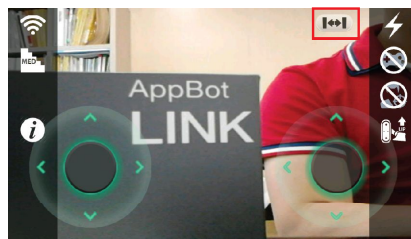
Run AppBot application.



Select direct mode at right. Image from Appbot is to be seen at Smartphone in wireless.



6. Setting of AppBot-LINK



Click Icon in upper right.

- : Flash ON / OFF
- : Joystick ON / OFF
- : Face detection mode ON / OFF
- : Stand Up Function
- : Internet mode connect
- : Quality change.

7. Do and don'ts

1. Do not put excessive force or do not shock into robot
2. WIFI USB LAN card installed in at Robot only allowed to use.
3. Wireless communication can be crossed when it is in use.

* AppBot-LINK Video Manual (Youtube link)

1. AppBot-LINK application download in App Store. <http://youtu.be/0OX2hV90Zi8>
2. AppBot-LINK Direct Mode connection. <http://youtu.be/pipRI-2Qj2E>
3. AppBot-LINK Internet_mode change <http://youtu.be/r2fZJgIUTs>
4. Internet mode to Direct mode change of AppBot-LINK <http://youtu.be/ewwAUGX4baY>
5. AppBot-LINK face detetion 01 http://youtu.be/L7p14Xv_U
6. AppBot-LINK face detetion 02 <http://youtu.be/EtiZMS2WBFA>
7. Flash on/off of AppBot-LINK <http://youtu.be/WciT77HTvj8>
8. Joystick on/off AppBot-LINK <http://youtu.be/Mb-M-VIOL74>
9. Stand up fuction of AppBot-LINK <http://youtu.be/bEMV3z8IfPU>